

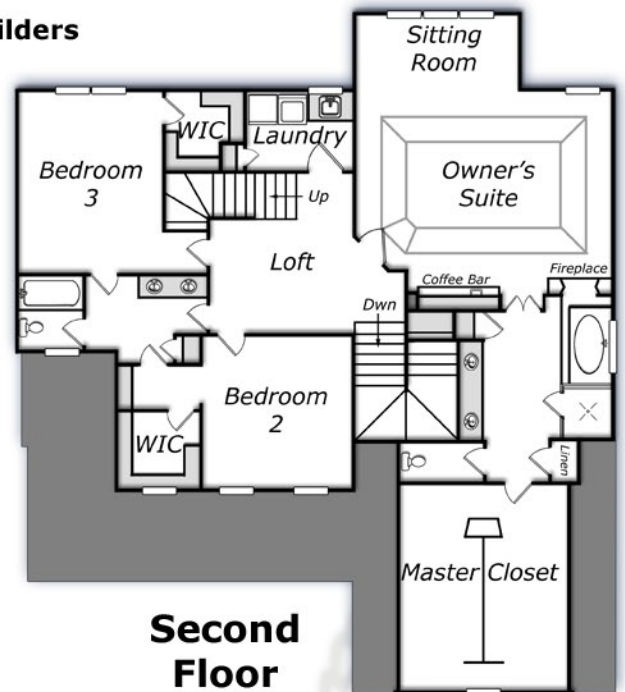
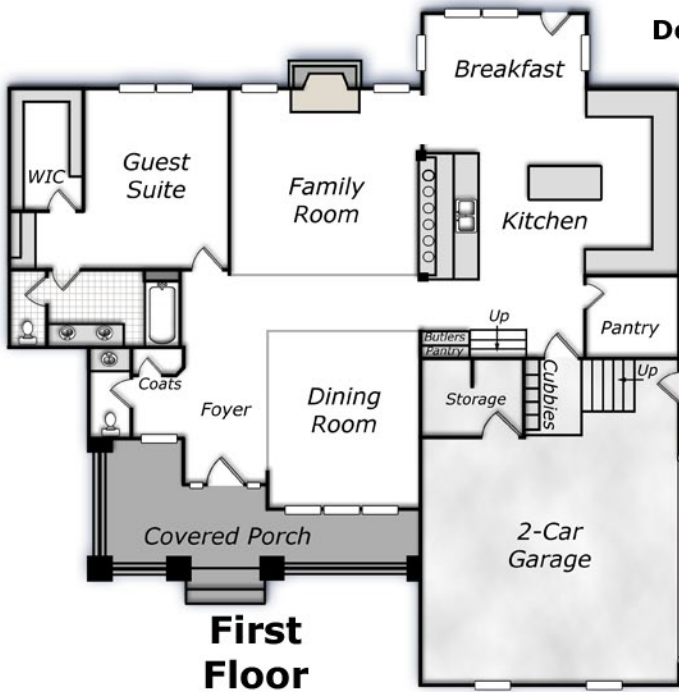
Gresham Crossing

Redefining the simple life ...



Lot #15
Doug Perry Builders

\$470,000



- 3185 sq. ft. 3 full and 1 half bath
- Country porch with rustic cedar columns and stone bases
- Custom wainscoting in foyer and dining room
- 9 foot ceilings on first floor
- Large kitchen with walk-in pantry, sitting area and center island
- Second floor Owner's Suite with sitting room, private balcony, coffee bar, spa bath, see-through fireplace in bathroom

- Rustic covered outdoor entertaining porch
- Downstairs guest suite with private bath and luxury tub
- Walk-up attic access
- 2-Car garage with large storage room and cubbies
- Landscape lighting in the front of the home
- Audio/visual integration package, lighting package, Security and computer networking

Developed by:

www.GreshamCrossing.com

Sales by:



For more information contact:

Gayla Strickland

252-431-6252 (office) 252-430-9046 (mobile) gayla@inet4u.com (email)



*All information deemed reliable but not guaranteed.